

MENTAL STATE EVALUATION BY USING SIGNAL PROCESSING

Mallikarjun H M ¹

Asst Prof, Dept. of EIE, RNSIT, Blr
Research Scholar, ECE Dept,
Karpagam University, CBT, TN

Dr. P Manimegalai ²

Prof, Dept. of ECE,
Karpagam University
Coimbatore, Tamilunadu, India

Dr. H N Suresh ³

Prof, Dept. of EIE,
BIT, Bangalore

Abstract— Feeling location of the individual by gathering the Electroencephalography (EEG) data, motion from the brain by utilizing "Mind wave kit", which gives the raw EEG waves by the non obtrusive strategy just utilizing single anode. Individual by viewing the distinctive enthusiastic recordings his feeling contrasts furthermore the electrical diverse EEG wave Alpha, Beta, Delta, Gama and theta shifts, distinctive waves having its nativity as indicated by the passionate changes.

Lucid scribe software support to gathering of information from the kit, the information traded to the exceed expectations and by finding the base and greatest estimation of each EEG wave, this is in the numerical qualities, prepared to the Neural Network by utilizing the Adaptive Neuro Fuzzy Inference System (ANFIS). Data with an augmentation of .mat record is prepared to the ANFIS, testing of the information with the effectively prepared information, yield will exist in which feeling the individual is, assessed yield might be 0 neutral, 1 Happy, 2 Disgust, 3 Sad, 4 Angry.

In this work Fuzzy based mental state evaluation utilizing signal handling is conveyed by get ready 280 samples are set up by demonstrating them diverse recordings identified with particular feelings. By utilizing neuro sky's mindwave pack cerebrum waves are recorded at the brow qualities are organized as needs be. 260 information tests prepared and 20 are tried. The 3.2×10^{-3} error is seen in the wake of plotting test FIS against preparing information. As mindwave kit is wearable with Bluetooth bolster this work might be utilized as a part of different applications.

Keywords—ANFIS, EEG, MATLAB, HCI

I. INTRODUCTION

Feeling is a Psycho-physiological process it is regularly happens with state of mind environment and identity. Our day by day works are relies on upon our feelings that we felt and respond with the circumstances and parts of the day. As people are

driving the communist life they can't escape from one's own particular feelings, they can't avoid it. The feelings are human stems from normal inherent source; as we develop from tyke to grown-up feelings develop along. One can ready to ace of their own feelings in the event that they are rationally solid. Feelings are in some cases intricate and stalwart perspective reactions in critical time. A few people can express their feelings and a few people who are aced over feelings they can ready to control the communicating feelings. There are various types of feelings that people can felt like cheerful, pitiful, nonpartisan, fear, amaze, quiet, ready, disturb, discourage, stretch and numerous others.

Electroencephalography (EEG) is the vital and helpful apparatus for measuring electrical movement of the cerebrum by this we can characterization and forecast of feelings. As one can ready to control the feeling without communicating yet the signs which are created in mind amid the responsive feeling can't be stifled so the genuine feeling are distinguished utilizing the variable distinctive voltages, they are Infra-low (<.5 Hz) Delta waves (.5 to 3 Hz) Theta waves (3 to 8 Hz) Theta waves (3 to 8 Hz) Alpha waves(8-12 Hz) Beta waves (12-38 Hz) can be recorded by utilizing terminals of two norms 10-10 and 10-20 anodes Available strategies for the recording of EEG signs is intrusive strategy, it is broadly utilized, and non obtrusive technique is likewise utilized infrequently.

Information accumulation is troublesome in view of EEG data is secret to defeat this we are utilizing portable mindwave kit from the producer Neurosky, this instrument brings the EEG waves by utilizing a solitary cathode that ought to be place on the forehead of a subject. Gama waves are assuming critical part in authoritative of our faculties with recognition prompts to learn new thing, this is lower than normal in the simple-minded. Beta waves are high recurrence with low plenty-fullness, which happened while alert, cognizant and considering. Higher beta arrives when drink of caffeine. Alpha waves are amongst beta and theta, it arrives when in profound unwinding, it is

blocked when in worry of in tired. Theta happens while dozing and wandering off in fantasy land likewise with feeling, high theta is mark of despondency. Delta waves show fundamentally in the youthful kids and after the profound rest, lesser in the profound rest additionally present while processing and direction of heart thumps.

Motion for any feelings EEG signs are fluctuates as indicated by their enthusiastic reaction; EEG information is gathered from the "Mind wave kit" that is non intrusive sort strategy with single terminal for accumulation of the distinctive scope of wave for various feelings .Bluetooth is in worked for information transmit to outside gadget, information is gotten to by the framework envisioned in the "Lucid scribe" programming software. Log base waves are put away in the product, by trading the waves to the exceed expectations organize by yield of the required moment, it is in numerical and by finding the base, most extreme and normal estimation of all waves.

Utilizing Neuro-fuzzy algorithm in the Matlab, via preparing the gathered information in ANSIF(Adaptive Neuro-fuzzy Inference System) and contrasting the test information and the prepared information, as indicated by the information feeling is appointed Normal-0, Happy-1, Disgust-2, Sad-3, Fear-4.

II. LITERATURE SURVEY

Thought to control robot by EEG motion, from the cerebrum, in this paper clarified about the right hand robots controlled to help the cripple and physically impaired individuals by measuring and recognizing their support to activity by utilizing biosensor.[1]

Counting feeling into the human-computer interaction (HCI), while feeling because of viewing passionate recordings the distinction in the mind electrical signs. Include calculation is for performing improved consecutive forward coasting. [2]

The information which is now pre-handled and acquired it from DEAP database gathered. Considered just alpha and theta were the subjects of intrigue neural system utilized for the feeling characterization into negative/energized, positive/quiet, negative/quiet and positive/energized is considered db4 wavelet coefficients for highlight extraction and flag disintegrated to various EEG groups. [3]

Brain electrical signs is of various sorts, which are happens for a distinct sorts of feeling in various extents, these are gathering from the cathode we will utilize "mind wave portable" that gets the crude EEG signals. In past papers they talked about location and forecast of Emotions, thought that to get distinguishing the distinctive feelings of a man effectively by utilizing the Neuro-fuzzy logic as a part of the MATLAB, gets the mental state assessment utilizing ANFIS handling.

III. FUNCTIONAL MODEL

The functional model of this project is as shown in the Figure 1. Electroencephalogram (EEG) signals are obtained from the mobile mind wave standard Database for Emotion Analysis using Physiological signals, data from the pre-processed signals are obtained and features are extracted using MATLAB, classification into five emotion classes is done from the inbuilt tools of the MATLAB.

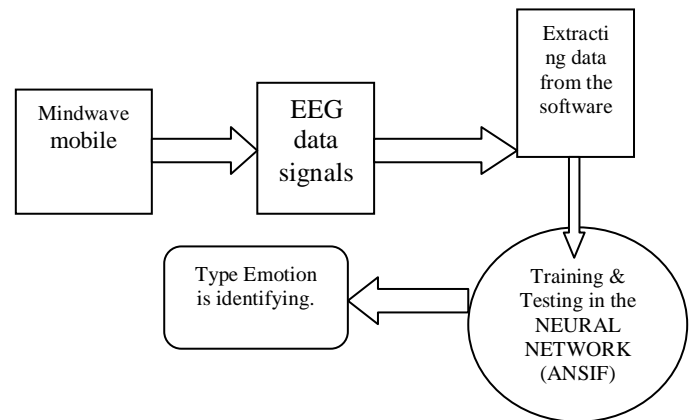


Figure.1 Functional block diagram

Standard EEG database signals are used to classify the different emotions, obtained the brain waves from the Database for Emotion recognition using Physiological signals that collected from the instrument is transmitted to the system by Bluetooth.

Mindwave mobile is manufactured from the neurosky, works in the frequency range of 512-HZ, shown in figure 2 ground clip pin for the reference and single electrode should be touch on the forehead, if the led indication is red it is not connected to the system as the blue light indicates the connectivity is good.

Neural Networks are the kind of logical network which are providing the artificial Neural network for the input as many number of nodes and input output functions.

Adaptive Neuro fuzzy inference system is a type of neural network, it is a good learning algorithm for modeling data, toolbox which is inbuilt in MATLAB, uses combination of two different algorithms for modeling data. ANFIS editor in Matlab is able to adjust its parameters concerned to the data modeling though it adjust the parameters according to the data sheet and the fuzzy inference system rules AND, OR functions are altered to get a better data model.

Neurosky manufacturer out come with the "Mind wave mobile" instrument work in 512-HZ of frequency consisting of only sing electrode, the raw signals is transmitted from the instrument via Bluetooth to the system, by the support of "Lucid scribe" software which hold he log of the overall time, EEG data from the instrument is shown in figure 3.3. Waves for every micro second is stored with the data sheet of every days, time, minute and seconds, by exporting this to the excel format we can get the numerical output.



Figure 2. Mind wave mobile

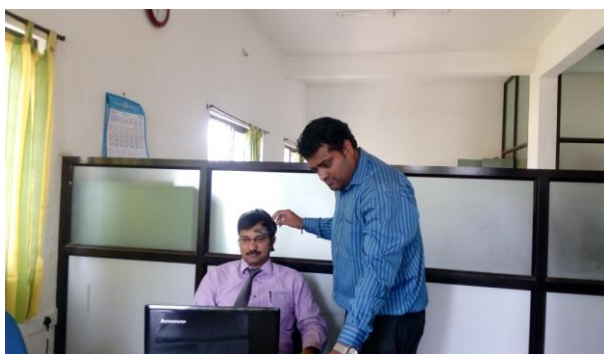


Figure 3. Data collection.

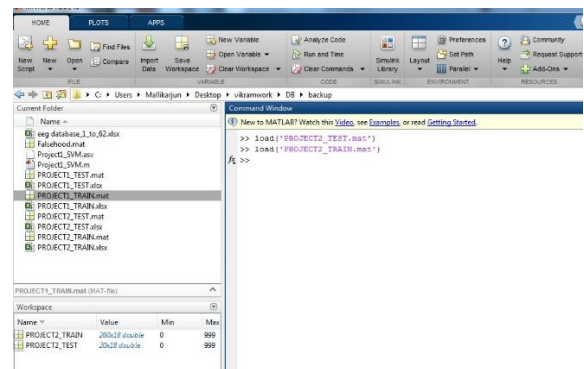
Brain Signals are recorded with neuro sky's mindwave kit. Information's of various age assemble and distinctive sex are taken. Lucid Scribe software

gives diverse mind wave signals regarding time. In Lucid Scribe Brain signs are gathered. The information is arranged for age, sex, alpha, gamma, theta, and delta for max, min and average qualities.

IV. RESULTS

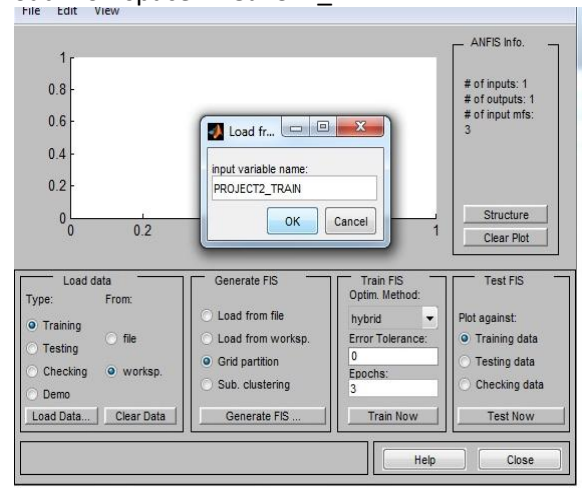
The work is implemented by classifying data sets in ANFIS.

Step 1: PROJECT2_TRAIN and PROJECT2_TEST mat files are loaded.



Step 2: The command Anfis edit should run in Matlab.

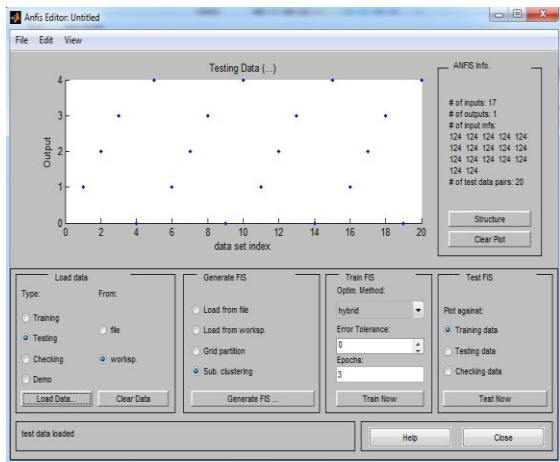
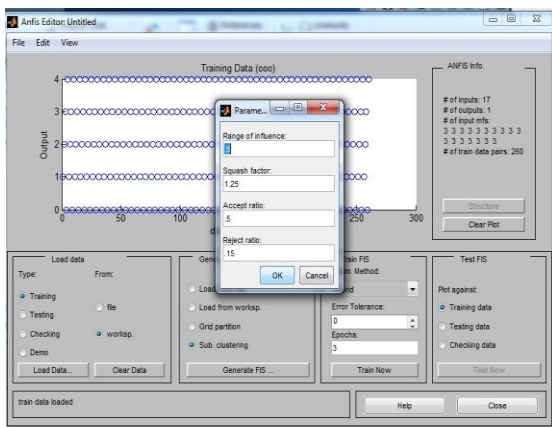
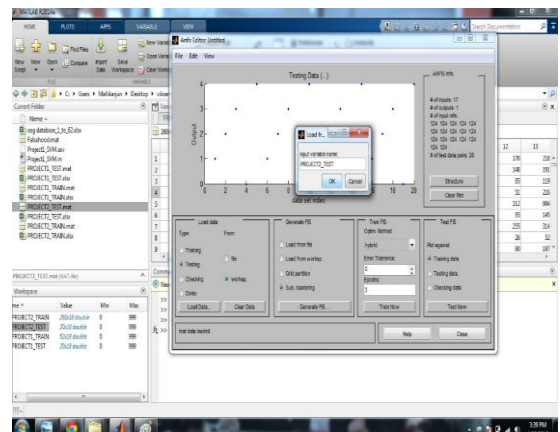
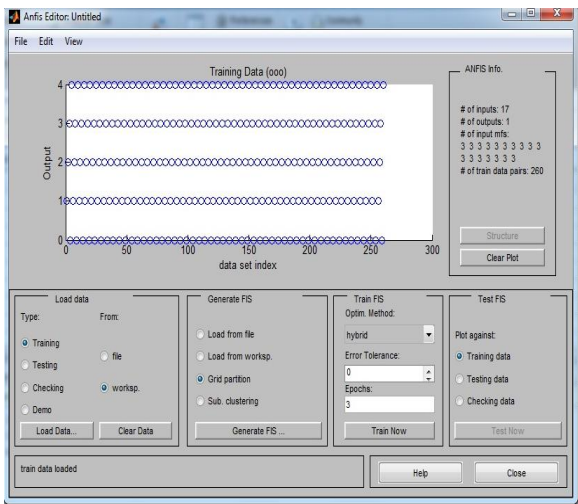
Load workspace PROJECT2_TRAIN



Step 3: 260 samples are trained by choosing 3 epochs

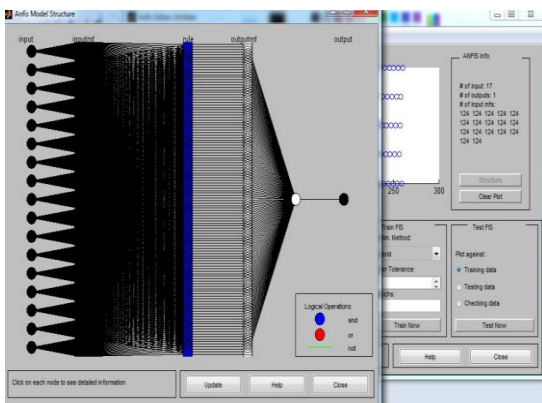
Data which collected is trained with respect to the emotions 0, 1, 2, 3, 4. The result if 0 is nutral,1=happy, 2=disgust, 3=sad, 4=fear.

This is given by entering values in the last column of training and testing workspaces.

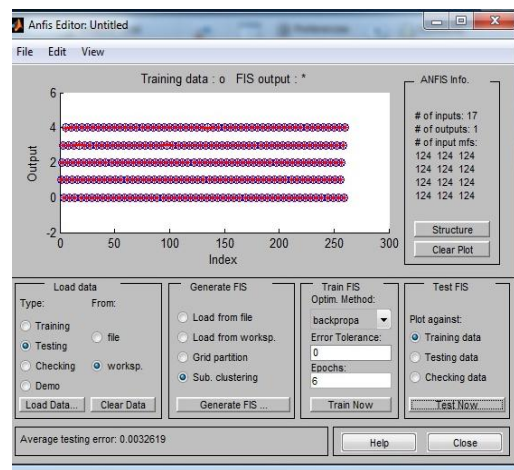


Step 4: FIS STRUCTURE

Step 6: 3.2×10^{-3} error is observed after generating FIS testing data.



Step 5: By loading test workspace 20 samples are tested - PROJECT2_TEST



V. CONCLUSION

In this work Fuzzy based Mental state assessment utilizing signal handling is conveyed by get ready 280 datasets are set up by indicating them diverse recordings identified with separate feelings. By utilizing neuro sky's mindwave kit brain-waves are recorded at

the temple qualities are organized as needs be. 260 datasets are trained in system and 20 are tested. The 3.2×10^{-3} error is seen subsequent to plotting test FIS against preparing information. As mindwave kit is wearable with Bluetooth bolster this work might be utilized as a part of different applications.

VI. FUTURE WORK

Mental state evaluation utilizing signal preparing is having extensive variety of utilizations in the public arena. This work might be further conveyed by get ready more number of samples and training them in the ANFIS.

REFERENCE

- [1] Apeksha Rani H. M, Prathibha Kiran International Journal of Soft Computing and Engineering (IJSCE) ISSN: 2231-2307, Volume-5 Issue-2, May 2015.
- [2] Jukka Kortelainen, Member, IEEE, and Tapio Seppänen 35th Annual International Conference of the IEEE EMBS Osaka, Japan, 3 - 7 July, 2013
- [3] Taciana Saad Rached and Angelo Perkusich An article of INTECH open science, open mind, <http://dx.doi.org/10.5772/56227>.
- [4] S.Hatamikia and A.M Nasrabadi, "Recognition of Emotional States Induced by Music Videos Based on Nonlinear Feature Extraction and SOM Classification", 21st Iranian conference on biomedical engineering, IEEE 2014.
- [5] Mr. A. Anbumani and A. Sathishkumar, "Emotion Analysis From Physiological Signal Using EEG", International Journal of Engineering Sciences & Management Research, 1(2): ISSN: 2349-6193 July, 2014.

ACKNOWLEDGMENT

The Authors might want to thank the administration of RNS Institute of Technology -Principal Dr. M K Venkatesha, Director Dr. H N Shivashankar for the consolation. Creators stretch out on account of Vikram S P, M.Tech, IE Branch, RNSIT for his nonstop support in database preparation.

BIOGRAPHICAL NOTES



First Author Mallikarjun H M is currently working as an Assistant Prof in dept. of EIE, RNSIT, Bangalore. His area of interest is EEG Signal Processing. He is presently working on emotional classification and Brain disorders - Depression behaviour, Sleep disorders and alcoholism by using EEG signals.



Dr. P Manimegalai Professor, Dept. of ECE, Karpagam University. Her area of interest is Bio Signal Processing, Wavelet Transforms, Biomedical Instrumentation and Applied Electronics.



Dr. H. N. Suresh is currently working as a Prof. in Dept. of EIE, BIT, Bangalore. He has good exposure in the field of signal processing, Wavelet Transforms, Neural Networks Modeling, Sensors and Transducers, Bio Medical Signal Processing and adaptive neural network systems.